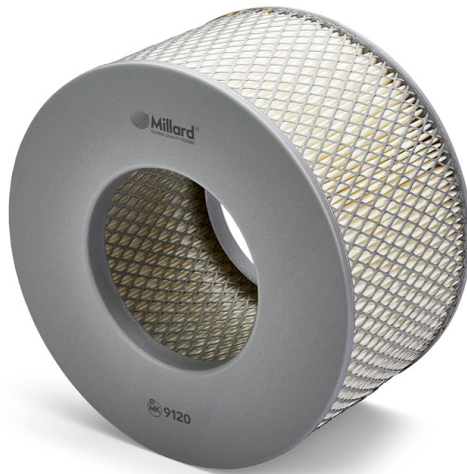


# MK 9120 Millard Air Filter

Catalog Europe, 16/04/2026



## DIMENSIONS

|                       |        |
|-----------------------|--------|
| H (Height):           | 120 mm |
| OD (Outer Diameter):  | 218 mm |
| ID (Inner Diameter):  | 110 mm |
| ID2 (Inner Diameter): | 110 mm |

## PRESENTATION

|                |                |
|----------------|----------------|
| UNITS PER BOX: | 12             |
| WEIGHT:        | 12.1 Kg        |
| VOLUME:        | 0.09 cbm       |
| EAN13:         | 5055148212148  |
| ITF14:         | 75055148212147 |



For updated information visit <http://mlrd.es/MK-9120>

## CROSS REFERENCES

|                     |            |               |             |
|---------------------|------------|---------------|-------------|
| <b>KNECHT/MAHLE</b> | LX 1139    | <b>TOYOTA</b> | 17801-54180 |
| <b>KNECHT/MAHLE</b> | LX1139     | <b>TOYOTA</b> | 1780154180  |
| <b>TOYOTA</b>       | 177005B080 |               |             |

## APPLICATIONS (EUROPE)

### METROCAB

| Serie | Model  | Engine      | Kw | HP | CV | Start | Finish |
|-------|--------|-------------|----|----|----|-------|--------|
| TAXI  | 2.4 TD | 2L-T Diesel | 66 | 88 | 90 | 2001  | 2006   |

### TOYOTA

| Serie                   | Model                             | Engine | Kw | HP | CV | Start | Finish |
|-------------------------|-----------------------------------|--------|----|----|----|-------|--------|
| HILUX VI Pick-up ( N1 ) | 2.4 D (LN145; LN 2L Diesel        |        | 58 | 78 | 79 | 1997  | 2005   |
| HILUX VI Pick-up ( N1 ) | 2.4 D (LN145; LN 2L; 2L-II Diesel |        | 61 | 82 | 83 | 1997  | 2001   |
| HILUX VI Pick-up ( N1 ) | 2.4 D (LN150; LN 2L Diesel        |        | 55 | 74 | 75 | 1997  | 2005   |
| HILUX VI Pick-up ( N1 ) | 2.4 TD (LN190) 2L-T Diesel        |        | 66 | 88 | 90 | 1997  | 2001   |
| HILUX VI Pick-up ( N1 ) | 2.4 TD 4WD (LN' 2L-T Diesel       |        | 66 | 88 | 90 | 1998  | 2002   |