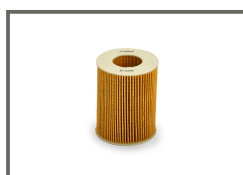
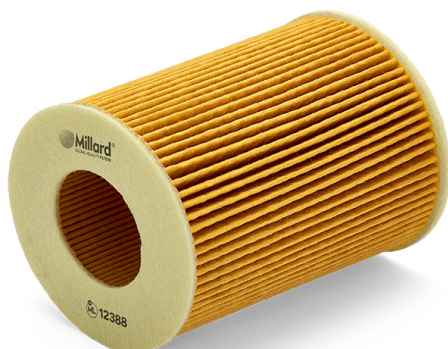



**12388** Millard Oil Filter
**DIMENSIONS**

H (Height):	85 mm
OD (Outer Diameter):	67 mm
ID (Inner Diameter):	32 mm
ID2 (Inner Diameter):	32 mm

**Gaskets:**

1 Unit/s (OD/ID)	80 mm / 73 mm
1 Unit/s (OD/ID)	16 mm / 10 mm

**PRESENTATION**

UNITS PER BOX:	24
WEIGHT:	1.6 Kg
VOLUME:	0.01 cbm
EAN13:	5055148201067
ITF14:	85055148201063



For updated information visit <http://mlrd.es/ML-12388>

**CROSS REFERENCES**

<b>COOPERSFIAAM</b>	FA5727ECO	<b>KNECHT/MAHLE</b>	OX369D
<b>HYUNDAI</b>	26320-27100	<b>MANN-FILTER</b>	HU714x
<b>HYUNDAI</b>	2632027100	<b>PURFLUX</b>	L365
<b>KNECHT/MAHLE</b>	OX 369D	<b>UFI</b>	2507100

**APPLICATIONS (EUROPE)****HYUNDAI**

Serie	Model	Engine	Kw	HP	CV	Start	Finish
ACCENT II (LC)	1.5 CRDi	D3EA Gasoleo	60	80	82	2002	2005
ACCENT II Sedan (LC)	1.5 CRDi	D3EA; D3DA Gasolec	60	80	82	2002	2005
GETZ (TB)	1.5 CRDi	D3EA Gasoleo	60	80	82	2003	2005
MATRIX (FC)	1.5 CRDi	D3EA Gasoleo	60	80	82	2001	2010

**KIA**

Serie	Model	Engine	Kw	HP	CV	Start	Finish
CEED Hatchback (ED)	2.0 CRDi 140	D4EA Gasoleo	103	138	140	2007	2012
CEED SW (ED)	2.0 CRDi 140	D4EA Gasoleo	103	138	140	2007	2012
PRO CEED (ED)	2.0 CRDi 140	D4EA Gasoleo	103	138	140	2008	2012