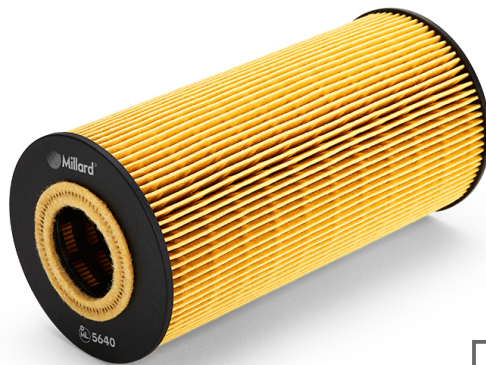


ML 5640 Millard Oil Filter

Catalog Europe, 04/04/2026



For updated information visit <http://mlrd.es/ML-5640>

DIMENSIONS

H (Height):	173 mm
OD (Outer Diameter):	84 mm
ID (Inner Diameter):	36 mm
ID2 (Inner Diameter):	36 mm

Gaskets:

1 Unit/s (OD/ID)	100 mm / 92 mm
1 Unit/s (OD/ID)	14 mm / 9 mm
1 Unit/s (OD/ID)	11 mm / 6 mm

PRESENTATION

UNITS PER BOX:	24
WEIGHT:	5.2 Kg
VOLUME:	0.04 cbm
EAN13:	5055148200725
ITF14:	85055148200721



CROSS REFERENCES

COOPERSFIAAM	FA5285	MERCEDES-BENZ	606 184 00 25
FRAM	CH5640ECO	MERCEDES-BENZ	606 184 01 25
HENGST	E172HD35	MERCEDES-BENZ	606 184 02 25
KNECHT/MAHLE	OX1231D	MERCEDES-BENZ	6061840325
LUBERFINER	P847	P.B.R.	AC8013
MAHLE	OX1231D	PBR	AC8013
MAN	5105500-6073	PURFLUX	L251
MANN-FILTER	HU951x	PUROLATOR	L37616
MERCEDES-BENZ	6021800009	WIX FILTERS	51187
MERCEDES-BENZ	606 180 01 09		

APPLICATIONS (EUROPE)

DAEWOO

Serie	Model	Engine	Kw	HP	CV	Start	Finish
MUSSO (FJ)	2.9 TD 4x4	OM662LA Diesel	88	118	120	1999	

FIAT

Serie	Model	Engine	Kw	HP	CV	Start	Finish
DUCATO Autobus (244)	2.3 JTD	F1AE0481C Diesel	81	109	110	2001	2006

KIA

Serie	Model	Engine	Kw	HP	CV	Start	Finish
K2500 Caja-Chasis (SD)	2.5 D	D4BH Diesel	69	92	94	2003	

MAN

Serie	Model	Engine	Kw	HP	CV	Start	Finish
HOCL	12.260	D 0836 LOH 62; D 08: 191	256	260	260	2005	2009
HOCL	12.260	D 0836 LOH 62; D 08: 191	256	260	260	2009	2014
HOCL	19.260	D 0836 LOH 60 Diese 213	286	289	289	2009	2014
HOCL	24.250	D 0836 LOH 61; D 08: 184	247	250	250	2012	LOH 73 Diesel



MAN							
Serie	Model	Engine	Kw	HP	CV	Start	Finish
HOCL	24.260	D 0836 LOH 63 Diese	191	256	260	2012	2014
HOCL	24.290	D 0836 LOH 60; D 08: 213		286	289	2012	
LIONS CITY	A 35	D 0836 LOH 60 Diese	213	286	289	2009	
LIONS CITY	A 35	D 0836 LOH 61 Diese	184	247	250	2009	
LIONS CITY	A 66	D 0836 LOH 60 Diese	213	286	289	2009	
LIONS CITY	A 66	D 0836 LOH 61 Diese	184	247	250	2009	
LIONS CITY	Lions City	D 0836 LOH 02; D 08: 206		276	280	2004	2006
LIONS CITY	Lions City	D 0836 LOH 03; D 08: 162		217	220	2004	2006
LIONS CITY	Lions City	D 0836 LOH 41; D 08: 176		236	239	2004	2009
LIONS CITY	Lions City	D 0836 LOH 62; D 08: 191		256	260	2007	
LIONS CITY	Lions City	D 0836 LOH 62; D 08: 191		256	260	2007	2014
LIONS CITY	Lions City	D 0836 LOH 62; D 08: 191		256	260	2007	2014
NL	240	D 0836 LOH 41; D 08: 176		236	239	2003	2004
NL	280	D 0836 LOH 02; D 08: 206		276	280	2000	2004
NL	280	D 0836 LOH 40; D 08: 206		276	280	2003	2004
SL II	SL 283	D 0836 LOH 01; D 08: 206		276	280	2005	2006
TGA	18.280	D 0836 LF 41 Diesel	206	276	280	2001	2001
TGA	18.330	D 0836 LF 44 Diesel	240	322	326	2001	2001
TGA	26.280	D 0836 LF 41 Diesel	206	276	280	2002	
TGA	26.330	D 0836 LF 44 Diesel	240	322	326	2002	
TGL I	10.180	D 0834 LFL 41; D 083 132	177	179	179	2005	2022
TGL I	10.180	D 0834 LFL 41; D 083 132	177	179	179	2005	2022
TGL I	10.180	D 0834 LFL 75 Diesel	132	177	179	2012	2022
TGL I	10.190	D 0834 LFL 78; D 083 140	188	190	190	2017	2022
TGL I	10.210	D 0834 LFL 42; D 083 151	202	205	205	2005	2022
TGL I	10.220	D 0834 LFL 65; D 083 162	217	220	220	2005	2022
TGL I	10.220	D 0834 LFL 76 Diesel	162	217	220	2012	2022
TGL I	10.240	D 0836 LFL 40; D 083 176	236	239	239	2005	2022
TGL I	10.250	D 0836 LFL 63; D 083 184	247	250	250	2005	2022
TGL I	10.250	D 0836 LFL 69; D 083 184	247	250	250	2008	2022
TGL I	12.180	D 0834 LFL 41; D 083 132	177	179	179	2005	2022
TGL I	12.180	D 0834 LFL 41; D 083 132	177	179	179	2005	2022
TGL I	12.180	D 0834 LFL 75 Diesel	132	177	179	2012	2022
TGL I	12.190	D 0834 LFL 78; D 083 140	188	190	190	2017	2022
TGL I	12.210	D 0834 LFL 42; D 083 151	202	205	205	2005	2022
TGL I	12.220	D 0834 LFL 65; D 083 162	217	220	220	2005	2022
TGL I	12.220	D 0834 LFL 65; D 083 162	217	220	220	2005	2022
TGL I	12.220	D 0834 LFL 76 Diesel	162	217	220	2012	2022
TGL I	12.240	D 0836 LFL 40; D 083 176	236	239	239	2005	2022
TGL I	12.250	D 0836 LFL 60; D 083 184	247	250	250	2005	2022
TGL I	12.250	D 0836 LFL 63; D 083 184	247	250	250	2005	2022
TGL I	12.250	D 0836 LFL 69; D 083 184	247	250	250	2008	2022
TGL I	7.150	D 0834 LFL 40; D 083 110	147	149	149	2004	2022
TGL I	7.150; 8.150	D 0834 LFL 40; D 083 110	147	149	149	2005	2022
TGL I	7.160	D 0834 LFL 77; D 083 118	158	160	160	2017	2022
TGL I	7.180	D 0834 LFL 41; D 083 132	177	179	179	2004	2022
TGL I	7.180	D 0834 LFL 75 Diesel	132	177	179	2012	2022
TGL I	7.180; 8.180	D 0834 LFL 41; D 083 132	177	179	179	2005	2022
TGL I	7.190	D 0834 LFL 78; D 083 140	188	190	190	2017	2022
TGL I	7.190	D 0834 LFL 84 Diesel	140	188	190	2018	2022
TGL I	8.150	D 0834 LFL 40; D 083 110	147	149	149	2006	2022
TGL I	8.160	D 0834 LFL 77 Diesel	118	158	160	2017	2022
TGL I	8.160	D 0834 LFL 83; D 083 118	158	160	160	2018	2022
TGL I	8.180	D 0834 LFL 41; D 083 132	177	179	179	2005	2022
TGL I	8.180	D 0834 LFL 41; D 083 132	177	179	179	2005	2022
TGL I	8.180	D 0834 LFL 75 Diesel	132	177	179	2012	2022
TGL I	8.190	D 0834 LFL 78 Diesel	140	188	190	2017	2022
TGL I	8.190	D 0834 LFL 84; D 083 140	188	190	190	2018	2022

DIMENSIONS

H (Height):	173 mm
OD (Outer Diameter):	84 mm
ID (Inner Diameter):	36 mm
Diezel Inner Diameter):	36 mm
Gaskets:	
1 Unit/s (OD/ID)	100 mm / 92 mm
1 Unit/s (OD/ID)	14 mm / 9 mm
1 Unit/s (OD/ID)	11 mm / 6 mm

PRESENTATION

UNITS PER BOX:	24
WEIGHT:	5.2 Kg
VOLUME:	0.04 cbm
EAN13:	5055148200725
ITF14:	85055148200721



L 64; D 0834 LFL 67 Diesel
L 64; D 0834 LFL 67; D 0834 LFL AB Diesel
L AG Diesel
L 76 Diesel
L 76; D 0834 LFL AC; D 0834 LFL 79; D 0834 LFL 85; D 0834 LFL
L 75 Diesel
FL BN Diesel
L 63; D 0834 LFL 60; D 0834 LFL 66 Diesel
L 63; D 0834 LFL 60; D 0834 LFL 66 Diesel
L AF Diesel
L 64; D 0834 LFL 61; D 0834 LFL 67 Diesel
L 64; D 0834 LFL 61; D 0834 LFL 67; D 0834 LFL 75 Diesel
L AG Diesel
L 63; D 0834 LFL 66 Diesel
L 64; D 0834 LFL 61; D 0834 LFL 67; D 0834 LFL 75 Diesel
L 64; D 0834 LFL 61; D 0834 LFL 67; D 0834 LFL 75; D 0834 LFL

ML 5640 Millard Oil Filter

DIMENSIONS

H (Height):	173 mm
OD (Outer Diameter):	84 mm
ID (Inner Diameter):	36 mm
ID2 (Inner Diameter):	36 mm
Gaskets:	
1 Unit/s (OD/ID)	100 mm / 92 mm
1 Unit/s (OD/ID)	14 mm / 9 mm
1 Unit/s (OD/ID)	11 mm / 6 mm

PRESENTATION

UNITS PER BOX:	24
WEIGHT:	5.2 Kg
VOLUME:	0.04 cbm
EAN13:	5055148200725
ITF14:	85055148200721



MAN							
Serie	Model	Engine	Kw	HP	CV	Start	Finish
TGL I	8.210	D 0834 LFL 42; D 083 151	202	205	205	2005	2022
TGL I	8.220	D 0834 LFL 65; D 083 162	217	220	220	2005	2022
TGL I	8.220	D 0834 LFL 76 Diesel	162	217	220	2012	2022
TGL I	8.240	D 0836 LFL 40; D 083 176	236	239	239	2005	2022
TGL I	8.250	D 0836 LFL 63; D 083 184	247	250	250	2005	2022
TGL I	8.250	D 0836 LFL 69; D 083 184	247	250	250	2008	2022
TGL II	10.150	D 0834 LFL 66; D 083 110	147	149	149	2020	
TGL II	10.180	D 0834 LFL 67; D 083 132	177	179	179	2020	
TGL II	10.220	D 0834 LFL AH; D 083 162	217	220	220	2020	
TGL II	10.250	D 0836 LFL AN; D 083 184	247	250	250	2020	
TGL II	10.290	D 0836 LFL 67; D 083 213	286	289	289	2020	
TGL II	10.340	D 0836 LFL 68; D 083 251	336	341	341	2020	
TGL II	12.150	D 0834 LFL 66; D 083 110	147	149	149	2020	
TGL II	12.180	D 0834 LFL 67; D 083 132	177	179	179	2020	
TGL II	12.220	D 0834 LFL AH; D 083 162	217	220	220	2020	
TGL II	12.250	D 0836 LFL AN; D 083 184	247	250	250	2020	
TGL II	12.290	D 0836 LFL 67; D 083 213	286	289	289	2020	
TGL II	12.340	D 0836 LFL 68; D 083 251	336	341	341	2020	
TGL II	7.150	D 0834 LFL 66; D 083 110	147	149	149	2020	
TGL II	7.180	D 0834 LFL 67; D 083 132	177	179	179	2020	
TGL II	7.220	D 0834 LFL AH; D 083 162	217	220	220	2020	
TGL II	7.250	D 0836 LFL AN; D 083 184	247	250	250	2020	
TGL II	7.290	D 0836 LFL 67; D 083 213	286	289	289	2020	
TGL II	7.340	D 0836 LFL 68; D 083 251	336	341	341	2020	
TGL II	8.150	D 0834 LFL 66; D 083 110	147	149	149	2020	
TGL II	8.180	D 0834 LFL 67; D 083 132	177	179	179	2020	
TGL II	8.220	D 0834 LFL AH; D 083 162	217	220	220	2020	
TGL II	8.250	D 0836 LFL AN; D 083 184	247	250	250	2020	
TGL II	8.290	D 0836 LFL 67; D 083 213	286	289	289	2020	
TGL II	8.340	D 0836 LFL 68; D 083 251	336	341	341	2020	
TGM I	12.240	D 0836 LFL 50; D 083 176	236	239	239	2005	2022
TGM I	12.250	D 0836 LFL 63; D 083 184	247	250	250	2005	2022
TGM I	12.250	D 0836 LFL 69; D 083 184	247	250	250	2008	2022
TGM I	12.280	D 0836 LFL 51; D 083 206	276	280	280	2005	2022
TGM I	12.290	D 0836 LFL 64; D 083 213	286	289	289	2005	2022
TGM I	12.290	D 0836 LFL 70; D 083 213	286	289	289	2008	2022
TGM I	13.240	D 0836 LFL 40; D 083 176	236	239	239	2006	2022
TGM I	13.240	D 0836 LFL 53 Diesel	176	236	239	2005	2022
TGM I	13.250	D 0836 LFL 63; D 083 184	247	250	250	2005	2022
TGM I	13.250	D 0836 LFL 63; D 083 184	247	250	250	2005	2022
TGM I	13.280	D 0836 LFL 41; D 083 206	276	280	280	2006	2022
TGM I	13.280	D 0836 LFL 54 Diesel	206	276	280	2005	2022
TGM I	13.290	D 0836 LFL 64; D 083 213	286	289	289	2005	2022
TGM I	15.240	D 0836 LFL 40; D 083 176	236	239	239	2005	2022
TGM I	15.240	D 0836 LFL 40; D 083 176	236	239	239	2005	2022
TGM I	15.250	D 0836 LFL 63; D 083 184	247	250	250	2005	2022
TGM I	15.250	D 0836 LFL 69; D 083 184	247	250	250	2008	2022
TGM I	15.280	D 0836 LFL 41; D 083 206	276	280	280	2005	2022
TGM I	15.280	D 0836 LFL 41; D 083 206	276	280	280	2005	2022
TGM I	15.290	D 0836 LFL 64; D 083 213	286	289	289	2005	2022
TGM I	15.290	D 0836 LFL 70; D 083 213	286	289	289	2008	2022
TGM I	15.320	D 0836 LFL 81; D 083 235	315	319	319	2017	2022
TGM I	15.330	D 0836 LFL 44; D 083 240	322	326	326	2005	2022
TGM I	15.340	D 0836 LFL 65; D 083 250	335	340	340	2005	2022
TGM I	15.340	D 0836 LFL 71 Diesel	250	335	340	2008	2022
TGM I	15.340	D 0836 LFL 77 Diesel	251	336	341	2012	2022
TGM I	16.240	D 0836 LFL 40; D 083 176	236	239	239	2005	2022
TGM I	16.250	D 0836 LFL 60; D 083 184	247	250	250	2008	2022

FL BN Diesel

L AP Diesel

L AA; D 0836 LFL 86; D 0836 LFL AN Diesel

MAN							
Serie	Model	Engine	Kw	HP	CV	Start	Finish
TGM I	16.250	D 0836 LFL 69; D 083 184	247	250	2008	2022	
TGM I	16.280	D 0836 LFL 41; D 083 206	276	280	2005	2022	
TGM I	16.290	D 0836 LFL 64; D 083 213	286	289	2008	2023	L AB; D 0836 LFL 87; D 0836 LFL AI; D 0836 LFL AO Diesel
TGM I	16.290	D 0836 LFL 70; D 083 213	286	289	2008	2022	
TGM I	18.240	D 0836 LFL 40; D 083 176	236	239	2005	2022	
TGM I	18.240	D 0836 LFL 40; D 083 176	236	239	2005	2022	
TGM I	18.240	D 0836 LFL 40; D 083 176	236	239	2006	2022	
TGM I	18.250	D 0836 LFL 60; D 083 184	247	250	2005	2022	L AA; D 0836 LFL 79; D 0836 LFL 86; D 0836 LFL 92; D 0836 LFL
TGM I	18.250	D 0836 LFL 63; D 083 184	247	250	2005	2022	
TGM I	18.250	D 0836 LFL 63; D 083 184	247	250	2005	2022	
TGM I	18.250	D 0836 LFL 69; D 083 184	247	250	2008	2022	
TGM I	18.280	D 0836 LFL 41; D 083 206	276	280	2005	2022	
TGM I	18.280	D 0836 LFL 41; D 083 206	276	280	2005	2022	
TGM I	18.290	D 0836 LFL 64; D 083 213	286	289	2005	2022	
TGM I	18.290	D 0836 LFL 70; D 083 213	286	289	2008	2022	
TGM I	18.320	D 0836 LFL 81; D 083 235	315	319	2017	2022	L AP Diesel
TGM I	18.330	D 0836 LFL 44; D 083 240	322	326	2005	2022	
TGM I	18.330	D 0836 LFL 44; D 083 240	322	326	2005	2022	
TGM I	18.340	D 0836 LFL 65; D 083 250	335	340	2005	2022	
TGM I	18.340	D 0836 LFL 71 Diesel 250	335	340	2008	2022	
TGM I	18.340	D 0836 LFL 77 Diesel 251	336	341	2012	2022	
TGM I	22.240	D 0836 LFL 53 Diesel 176	236	239	2005	2022	
TGM I	22.250	D 0836 LFL 63; D 083 184	247	250	2005	2022	
TGM I	22.250	D 0836 LFL 69; D 083 184	247	250	2008	2022	
TGM I	22.280	D 0836 LFL 54 Diesel 206	276	280	2005	2022	
TGM I	22.290	D 0836 LFL 64 Diesel 213	286	289	2005	2022	
TGM I	22.290	D 0836 LFL 70; D 083 213	286	289	2008	2022	
TGM I	26.280	D 0836 LFL 51; D 083 206	276	280	2006	2022	
TGM I	26.280	D 0836 LFL 54 Diesel 206	276	280	2005	2022	
TGM I	26.290	D 0836 LFL 64 Diesel 213	286	289	2005	2022	
TGM I	26.290	D 0836 LFL 64; D 083 213	286	289	2005	2022	
TGM I	26.290	D 0836 LFL 64; D 083 213	286	289	2008	2022	
TGM I	26.290	D 0836 LFL 70; D 083 213	286	289	2008	2022	
TGM I	26.290	D 0836 LFL 70; D 083 213	286	289	2009	2022	
TGM I	26.320	D 0836 LFL 81; D 083 235	315	319	2017	2022	L AP Diesel
TGM I	26.330	D 0836 LFL 52; D 083 240	322	326	2006	2022	
TGM I	26.330	D 0836 LFL 55 Diesel 240	322	326	2005	2022	
TGM I	26.340	D 0836 LFL 65 Diesel 250	335	340	2005	2022	
TGM I	26.340	D 0836 LFL 65; D 083 250	335	340	2005	2022	
TGM I	26.340	D 0836 LFL 65; D 083 250	335	340	2008	2022	
TGM I	26.340	D 0836 LFL 65; D 083 250	335	340	2005	2022	
TGM I	26.340	D 0836 LFL 68; D 083 251	336	341	2012	2022	
TGM I	26.340	D 0836 LFL 71 Diesel 250	335	340	2008	2022	
TGM I	26.340	D 0836 LFL 71 Diesel 250	335	340	2009	2022	
TGM I	26.340	D 0836 LFL 77 Diesel 251	336	341	2012	2022	
TGM II	12.250	D 0836 LFL AN; D 08: 184	247	250	2020		
TGM II	12.290	D 0836 LFL AO; D 08: 213	286	289	2020		
TGM II	12.340	D 0836 LFL 68; D 083 251	336	341	2020		
TGM II	13.250	D 0836 LFL AN; D 08: 184	247	250	2020		
TGM II	13.290	D 0836 LFL AO; D 08: 213	286	289	2020		
TGM II	13.340	D 0836 LFL 68; D 083 251	336	341	2020		
TGM II	15.250	D 0836 LFL AN; D 08: 184	247	250	2020		
TGM II	15.290	D 0836 LFL AO; D 08: 213	286	289	2020		
TGM II	15.340	D 0836 LFL 68; D 083 251	336	341	2020		
TGM II	18.250	D 0836 LFL AN; D 08: 184	247	250	2020		
TGM II	18.290	D 0836 LFL AO; D 08: 213	286	289	2020		
TGM II	18.340	D 0836 LFL 68; D 083 251	336	341	2020		
TGM II	19.250	D 0836 LFL AN; D 08: 184	247	250	2020		

DIMENSIONS

H (Height): 173 mm

OD (Outer Diameter): 84 mm

ID (Inner Diameter): 36 mm

ID2 (Inner Diameter): 36 mm

Gaskets: L AB; D 0836 LFL 87; D 0836 LFL AI; D 0836 LFL AO Diesel

1 Unit/s (OD/ID) 100 mm / 92 mm

1 Unit/s (OD/ID) 14 mm / 9 mm

1 Unit/s (OD/ID) 11 mm / 6 mm

PRESENTATION: L AA; D 0836 LFL 79; D 0836 LFL 86; D 0836 LFL 92; D 0836 LFL

UNITS PER BOX: 24

WEIGHT: 5.2 Kg

VOLUME: 0.04 cbm

EAN13: 5055148200725

EAN14: 85055148200721



MAN							
Serie	Model	Engine	Kw	HP	CV	Start	Finish
TGM II	19.290	D 0836 LFL AO; D 08: 213	286	289	2020		
TGM II	19.340	D 0836 LFL 68; D 083 251	336	341	2020		
TGM II	26.250	D 0836 LFL AN; D 08: 184	247	250	2020		
TGM II	26.290	D 0836 LFL AO; D 08: 213	286	289	2020		
TGM II	26.340	D 0836 LFL 68; D 083 251	336	341	2020		

MERCEDES-BENZ							
Serie	Model	Engine	Kw	HP	CV	Start	Finish
CLASE C (W202)	C 200 D (202.12)	OM 601.913 Diesel	55	74	75	1993	2000
CLASE C (W202)	C 200 D (202.12)	OM 604.915 Diesel	65	87	88	1996	2000
CLASE C (W202)	C 220 D (202.021)	OM 604.910 Diesel	55	74	75	1996	2000
CLASE C (W202)	C 220 D (202.121)	OM 604.910 Diesel	70	94	95	1993	2000
CLASE C (W202)	C 250 D (202.12)	OM 605.910 Diesel	83	111	113	1993	2000
CLASE C (W202)	C 250 Turbo-D (2)	OM 605.960 Diesel	110	147	149	1995	2000
CLASE C T-Model (S202)	C 200 T D (202.1)	OM 604.915 Diesel	65	87	88	1996	2001
CLASE C T-Model (S202)	C 220 T D (202.1)	OM 604.910 Diesel	55	74	75	1996	2001
CLASE C T-Model (S202)	C 220 T D (202.1)	OM 604.910 Diesel	70	94	95	1996	1998
CLASE C T-Model (S202)	C 250 T Turbo-D	OM 605.960 Diesel	110	147	149	1996	2001
CLASE E (W124)	E 250 D (124.12)	OM 605.911 Diesel	83	111	113	1993	1995
CLASE E (W124)	E 250 Turbo-D (1)	OM 602.962 Diesel	93	125	126	1993	1995
CLASE E (W210)	E 200 D (210.00)	OM 604.917 Diesel	65	87	88	1996	2002
CLASE E (W210)	E 220 D	OM 604.912 Diesel	55	74	75	1996	2002
CLASE E (W210)	E 220 D (210.004)	OM 604.912 Diesel	70	94	95	1995	1999
CLASE E (W210)	E 250 D (210.01)	OM 605.912 Diesel	83	111	113	1995	1999
CLASE E (W210)	E 250 Turbo-D (2)	OM 605.962 Diesel	110	147	149	1997	1999
CLASE E (W210)	E 290 Turbo-D (2)	OM 602.982 Diesel	95	127	129	1996	1999
CLASE E (W210)	E 300 D (210.02)	OM 606.912 Diesel	100	134	136	1995	1997
CLASE E (W210)	E 300 Turbo-D (2)	OM 606.962 Diesel	130	174	177	1996	1999
CLASE E T-Model (S124)	E 250 TD (124.1)	OM 605.911 Diesel	83	111	113	1993	1996
CLASE E T-Model (S124)	E 250 Turbo D	OM 602.962 Diesel	93	125	126	1993	1996
CLASE E T-Model (S210)	E 250 T D (210.2)	OM 605.912 Diesel	83	111	113	1996	1999
CLASE E T-Model (S210)	E 250 T Turbo-D	OM 605.962 Diesel	110	147	149	1997	1999
CLASE E T-Model (S210)	E 290 T Turbo-D	OM 602.982 Diesel	95	127	129	1996	1999
CLASE E T-Model (S210)	E 300 T Turbo-D	OM 606.962 Diesel	130	174	177	1996	1999
CLASE G (W461)	G 290 TD (461.3)	OM 602.983 Diesel	88	118	120	1997	2001
CLASE G (W463)	G 300 TD (463.3)	OM 606.964 Diesel	130	174	177	1996	2000
CLASE G Cabrio (W463)	G 300 TD (463.3)	OM 606.964 Diesel	130	174	177	1996	2000
CLASE S (W140)	S 300 Turbo-D (1)	OM 606.961 Diesel	130	174	177	1996	1998
CLASE V (638-2)	V 230 TD (638.2)	OM 601.970 Diesel	72	97	98	1996	2003
CLASE V Furgoneta (638-2)	V 230 (638.274)	OM 601.970 Diesel	72	97	98	1996	1999
CLASE-E Caja-Chasis (VF210)	E 290 TD (210.6)	OM 602.982 Diesel	95	127	129	1996	1999
SPRINTER 2-t Autobus (B901; 208 D (901.371; 9	OM 601.943 Diesel	58	78	79	1995	2000	
SPRINTER 2-t Autobus (B901; 210 D (902.471; 9	OM 602.980 Diesel	75	101	102	1997	2000	
SPRINTER 2-t Autobus (B901; 212 D (902.471; 9	OM 602.980 Diesel	90	121	122	1995	2000	
SPRINTER 2-t Caja-Chasis (B901; 208 D (901.311; 9	OM 601.943 Diesel	58	78	79	1995	2000	
SPRINTER 2-t Caja-Chasis (B901; 208 D (901.311; 9	OM 601.943 Diesel	60	80	82	1996	2000	
SPRINTER 2-t Caja-Chasis (B901; 210 D (901.421; 9	OM 602.980 Diesel	75	101	102	1997	2000	
SPRINTER 2-t Caja-Chasis (B901; 212 D (901.421; 9	OM 602.980 Diesel	90	121	122	1995	2000	
SPRINTER 2-t Furgoneta (B901; 208 D (901.361; 9	OM 601.943 Diesel	58	78	79	1995	2000	
SPRINTER 2-t Furgoneta (B901; 208 D (901.361; 9	OM 601.943 Diesel	60	80	82	1996	2000	
SPRINTER 2-t Furgoneta (B901; 210 D (901.461; 9	OM 602.980 Diesel	75	101	102	1997	2000	
SPRINTER 2-t Furgoneta (B901; 212 D (901.461; 9	OM 602.980 Diesel	90	121	122	1995	2000	
SPRINTER 3-t Autobus (B903) 308 D (903.371; 9	OM 601.943 Diesel	60	80	82	1997	2000	
SPRINTER 3-t Autobus (B903) 308 D (903.372; 9	OM 601.943 Diesel	58	78	79	1995	2000	
SPRINTER 3-t Autobus (B903) 310 D 4x4 (903.4	OM 602.980 Diesel	75	101	102	1997	2002	
SPRINTER 3-t Autobus (B903) 312 D 2.9 (903.4	OM 602.980 Diesel	90	121	122	1995	2000	
SPRINTER 3-t Autobus (B903) 312 D 2.9 4x4 (903.4	OM 602.980 Diesel	90	121	122	1997	2002	
SPRINTER 3-t Caja-Chasis (B903) 308 D 2.3 (903.3	OM 601.943 Diesel	58	78	79	1995	2000	

DIMENSIONS

H (Height):	173 mm
OD (Outer Diameter):	84 mm
ID (Inner Diameter):	36 mm
ID2 (Inner Diameter):	36 mm
Gaskets:	
1 Unit/s (OD/ID)	100 mm / 92 mm
1 Unit/s (OD/ID)	14 mm / 9 mm
1 Unit/s (OD/ID)	11 mm / 6 mm

PRESENTATION

UNITS PER BOX:	24
WEIGHT:	5.2 Kg
VOLUME:	0.04 cbm
EAN13:	5055148200725
ITF14:	85055148200721



MERCEDES-BENZ

Serie	Model	Engine	Kw	HP	CV	Start	Finish
SPRINTER 3-t Caja-Chasis (B6308 D 2.3 (903.3) OM 601.943 Diesel			60	80	82	1996	2000
SPRINTER 3-t Caja-Chasis (B6310 D 2.9 (903.4) OM 602.980 Diesel			75	101	102	1997	2000
SPRINTER 3-t Caja-Chasis (B6310 D 2.9 4x4 (903.4) OM 602.980 Diesel			75	101	102	1997	2000
SPRINTER 3-t Caja-Chasis (B6312 D 2.9 (903.4) OM 602.980 Diesel			90	121	122	1995	2000
SPRINTER 3-t Caja-Chasis (B6312 D 2.9 4x4 (903.4) OM 602.980 Diesel			90	121	122	1995	2000
SPRINTER 3-t Furgoneta (B90308 D 2.3 (903.3) OM 601.943 Diesel			60	80	82	1995	2000
SPRINTER 3-t Furgoneta (B90308 D 2.3 (903.3) OM 601.943 Diesel			58	78	79	1995	2000
SPRINTER 3-t Furgoneta (B90310 D 2.9 (903.4) OM 602.980 Diesel			75	101	102	1995	2000
SPRINTER 3-t Furgoneta (B90310 D 2.9 4x4 (903.4) OM 602.980 Diesel			75	101	102	1997	2000
SPRINTER 3-t Furgoneta (B90312 D 2.9 (903.4) OM 602.980 Diesel			90	121	122	1995	2000
SPRINTER 3-t Furgoneta (B90312 D 2.9 4x4 (903.4) OM 602.980 Diesel			90	121	122	1997	2002
SPRINTER 4-t Caja-Chasis (B6408 D OM 601.943 Diesel			58	78	79	1996	2006
SPRINTER 4-t Caja-Chasis (B6410 D OM 602.980 Diesel			75	101	102	1996	2006
SPRINTER 4-t Caja-Chasis (B6410 D 4x4 OM 602.980 Diesel			75	101	102	1997	2006
SPRINTER 4-t Caja-Chasis (B6412 D OM 602.980 Diesel			85	114	115	1996	2006
SPRINTER 4-t Caja-Chasis (B6412 D OM 602.980 Diesel			90	121	122	1996	2006
SPRINTER 4-t Caja-Chasis (B6412 D 4x4 OM 602.980 Diesel			85	114	115	1997	2006
SPRINTER 4-t Caja-Chasis (B6412 D 4x4 OM 602.980 Diesel			90	121	122	1997	2006
SPRINTER 4-t Furgoneta (B90408 D OM 601.943 Diesel			58	78	79	1996	2006
SPRINTER 4-t Furgoneta (B90410 D OM 602.980 Diesel			75	101	102	1996	2006
SPRINTER 4-t Furgoneta (B90410 D 4x4 OM 602.980 Diesel			75	101	102	1997	2006
SPRINTER 4-t Furgoneta (B90412 D OM 602.980 Diesel			85	114	115	1996	2006
SPRINTER 4-t Furgoneta (B90412 D OM 602.980 Diesel			90	121	122	1996	2006
SPRINTER 4-t Furgoneta (B90412 D 4x4 OM 602.980 Diesel			85	114	115	1997	2006
SPRINTER 4-t Furgoneta (B90412 D 4x4 OM 602.980 Diesel			90	121	122	1997	2006
UNIMOG U 100L OM 602.981; OM 602.85			85	114	115	1996	
UNIMOG U 90 OM 602.981; OM 602.85			85	114	115	1996	
UNIMOG UX 100H; UX 100 OM 602.981; OM 602.80			80	107	109	1996	
VARIO Autobus (B670) O 812 (670.373; OM 602.984; OM 602.90			90	121	122	1996	2010
VARIO Caja-Chasis (B670; B66512 D (667.321; OM 602.984 Diesel			90	121	122	1996	2010
VARIO Caja-Chasis (B670; B66612 D (668.321; OM 602.984; OM 602.90			90	121	122	1996	2010
VARIO Caja-Chasis (B670; B66612 D (668.331; OM 602.984; OM 602.90			90	121	122	1996	2010
VARIO Caja-Chasis (B670; B66812 D (670.321; OM 602.984; OM 602.90			90	121	122	1996	2010
VARIO Caja-Chasis (B670; B66812 D (670.331; OM 602.984; OM 602.90			90	121	122	1996	2010
VARIO Furgoneta (B667; B670 512 D (667.351; OM 602.984 Diesel			90	121	122	1996	2010
VARIO Furgoneta (B667; B670 612 D (668.351; OM 602.984; OM 602.90			90	121	122	1996	2010
VARIO Furgoneta (B667; B670 812 D (670.351; OM 602.984; OM 602.90			90	121	122	1996	2010
VITO Autobus (W638) 108 D 2.3 (638.1) OM 601.942 Diesel			58	78	79	1996	2003
VITO Autobus (W638) 110 TD 2.3 (638.0) OM 601.970 Diesel			72	97	98	1996	2003
VITO Furgoneta (W638) 108 D 2.3 (638.0) OM 601.942 Diesel			58	78	79	1997	2003
VITO Furgoneta (W638) 110 D 2.3 (638.0) OM 601.970 Diesel			72	97	98	1997	2003

MULTICAR

Serie	Model	Engine	Kw	HP	CV	Start	Finish
Tremo	601	OM 601.900 Diesel	62	83	84	1998	
UX100	UX100H; UX100M	OM 602.989 Diesel	85	114	115	1999	
UX100	UX100M	OM 602.989 Diesel	85	114	115	1999	

OPTARE

Serie	Model	Engine	Kw	HP	CV	Start	Finish
SOLO	M 710 SE; M 780	Diesel	132	177	179	2008	
SOLO	M 810; M 880; M	Diesel	132	177	179	2008	
SOLO SR	M 890; M 960	D 0834 LOH 50 Diese	132	177	179	2007	
TEMPO	X1060; X1130; X	D 0836 LOH 51 Diese	206	276	280	2004	
VERSA	V 1040; V 1110	D 0834 LOH 50 Diese	132	177	179	2006	

PEUGEOT

Serie	Model	Engine	Kw	HP	CV	Start	Finish
BOXER Autobus	2.2 HDi 110	4HG (P22DTE) Diesel	81	109	110	2011	2020

DIMENSIONS

H (Height):	173 mm
OD (Outer Diameter):	84 mm
ID (Inner Diameter):	36 mm
ID2 (Inner Diameter):	36 mm
Gaskets:	
1 Unit/s (OD/ID)	100 mm / 92 mm
1 Unit/s (OD/ID)	14 mm / 9 mm
1 Unit/s (OD/ID)	11 mm / 6 mm

PRESENTATION

UNITS PER BOX:	24
WEIGHT:	5.2 Kg
VOLUME:	0.04 cbm
EAN13:	5055148200725
ITF14:	85055148200721



PEUGEOT

Serie	Model	Engine	Kw	HP	CV	Start	Finish
BOXER Autobus	2.2 HDi 130	4HH (P22DTE) Diesel	96	129	130	2011	
BOXER Autobus	2.2 HDi 150	4HJ (P22DTE) Diesel	110	147	149	2011	
BOXER Caja-Chasis	2.2 HDi 110	4HG (P22DTE) Diesel	81	109	110	2011	2020
BOXER Caja-Chasis	2.2 HDi 150	4HJ (P22DTE) Diesel	110	147	149	2011	
BOXER Caja-Chasis	3.0 HDi 175	F1CE3481E (F30DT)	130	174	177	2011	
BOXER Furgoneta	2.2 HDi 110	4HG (P22DTE) Diesel	81	109	110	2011	2020
BOXER Furgoneta	2.2 HDi 130	4HH (P22DTE) Diesel	96	129	130	2011	
BOXER Furgoneta	2.2 HDi 150	4HJ (P22DTE) Diesel	110	147	149	2011	
BOXER Furgoneta	3.0 HDi 175	F1CE3481E (F30DT)	130	174	177	2011	
BOXER Furgoneta (230L)	2.0 i	RFW (XU10J2) Gasol	80	107	109	1994	2002

PUCH

Serie	Model	Engine	Kw	HP	CV	Start	Finish
G-MODELL (W461)	290 GD Turbodie	OM 602.983 Diesel	88	118	120	1997	2001
G-MODELL (W463)	G 300 Turbodies	OM 606.964 Diesel	130	174	177	1996	2000

SSANGYONG

Serie	Model	Engine	Kw	HP	CV	Start	Finish
KORANDO (KJ)	2.3 TDiC 4x4	OM661LA Diesel	74	99	101	1998	2006
MUSSO (FJ)	2.9 TD	OM 662 LA Diesel	88	118	120	1998	2007
MUSSO SPORTS	2.9 D 4x4	OM 662 LA Diesel	88	118	120	2004	
REXTON - REXTON II (GAB)	2.9 TD	OM 662.925 Diesel	88	118	120	2002	2006

DIMENSIONS

H (Height): 173 mm

OD (Outer Diameter): 84 mm

ID (Inner Diameter): 36 mm

ID2 (Inner Diameter): 36 mm

Gaskets:

1 Unit/s (OD/ID) 100 mm / 92 mm

1 Unit/s (OD/ID) 14 mm / 9 mm

1 Unit/s (OD/ID) 11 mm / 6 mm

PRESENTATION

UNITS PER BOX: 24

WEIGHT: 5.2 Kg

VOLUME: 0.04 cbm

EAN13: 5055148200725

ITF14: 85055148200721

