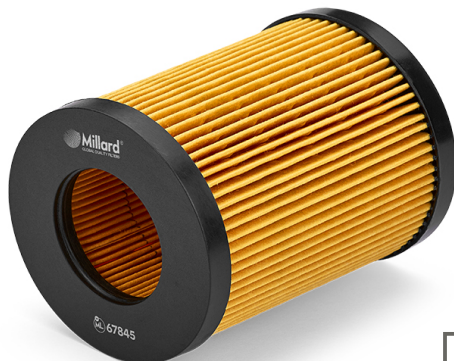


ML 67845 Millard Oil Filter

Catalog Europe, 06/04/2026



For updated information visit <http://mldr.es/ML-67845>

DIMENSIONS

H (Height):	104 mm
OD (Outer Diameter):	84 mm
ID (Inner Diameter):	43 mm
ID2 (Inner Diameter):	43 mm

Gaskets:

1 Unit/s (OD/ID)	100 mm / 92 mm
1 Unit/s (OD/ID)	12 mm / 7 mm
1 Unit/s (OD/ID)	12 mm / 7 mm
1 Unit/s (OD/ID)	18 mm / 12 mm

PRESENTATION

UNITS PER BOX:	24
WEIGHT:	3.4 Kg
VOLUME:	0.02 cbm
EAN13:	5055148201371
ITF14:	85055148201377



CROSS REFERENCES

BMW	11 42 1740 534	KNECHT/MAHLE	OX1541D
BMW	11 42 7 512 300	MANN-FILTER	HU 925/4 x
BMW	11421740534	MANN-FILTER	HU9254x
BOSCH	1457437003	PURFLUX	L292
HENGST	E106H D34	UFI	2500400
HENGST	E106HD34		

APPLICATIONS (EUROPE)

ALPINA

Serie	Model	Engine	Kw	HP	CV	Start	Finish
B10 (E39)	3.2	M60 B30 (308S6K) Gc	191	256	260	1997	1998
B10 Touring (E39)	3.2	M60 B30 (308S6K) Gc	191	256	260	1997	1998
B3 (E46)	3.3	M52 B28 (286S) Gasc	206	276	280	1999	2002
B3 (E46)	3.3 A las 4 rueda	M52 B28 (286S7T) Gc	206	276	280	2001	2005
B3 (E46)	3.4 S	M52 B28 (286ST5) Gc	224	300	304	2002	2006
B3 Coupe (E46)	3.3	M52 B28 (286S) Gasc	206	276	280	1999	2002
B3 Coupe (E46)	3.4 S	M52 B28 (286ST5) Gc	224	300	304	2002	2006
B3 Descapotable (E46)	3.3	M52 B28 (286S7T) Gc	206	276	280	2000	2002
B3 Descapotable (E46)	3.4 S	M52 B28 (286ST5) Gc	224	300	304	2002	2005
B3 Touring (E46)	3.3	M52 B28 (286S) Gasc	206	276	280	1999	2002
B3 Touring (E46)	3.3 A las 4 rueda	M52 B28 (286S7T) Gc	206	276	280	2001	2005
B3 Touring (E46)	3.4 S	M52 B28 (286ST5) Gc	224	300	304	2002	2006
ROADSTER S (E85)	3.3	E 5 2 Gasolina	221	296	300	2003	2005

BMW

Serie	Model	Engine	Kw	HP	CV	Start	Finish
3 (E36)	320 i	M50 B20 (206S1); M5 110	147	147	149	1991	1998 Gasolina
3 (E36)	323 i	M52 B25 (256S3) Gasc	125	168	170	1995	1998
3 (E36)	325 i	M50 B25 (256S1); M5 141	189	189	192	1990	1995
3 (E36)	328 i	M52 B28 (286S1) Gasc	142	190	193	1995	1998
3 (E36)	M3 3.0	S50 B30 (306S1) Gas	210	282	285	1994	1995
3 (E36)	M3 3.2	S50 B32 (326S1) Gas	236	316	321	1995	1998


67845 Millard Oil Filter

BMW							
Serie	Model	Engine	Kw	HP	CV	Start	Finish
3 (E46)	320 i	M52 B20 (206S4) Gas	110	147	149	1998	2000
3 (E46)	320 i	M54 B22 (226S1) Gas	125	168	170	2000	2005
3 (E46)	323 i	M52 B25 (256S4) Gas	125	168	170	1998	2000
3 (E46)	325 i	M54 B25 (256S5) Gas	141	189	192	2000	2005
3 (E46)	325 xi	M54 B25 (256S5) Gas	141	189	192	2000	2005
3 (E46)	328 i	M52 B28 (286S2) Gas	142	190	193	1998	2000
3 (E46)	330 i	M54 B30 (306S3) Gas	170	228	231	2000	2005
3 (E46)	330 xi	M54 B30 (306S3) Gas	170	228	231	2000	2005
3 (E90)	330 i	N52 B30 A; N52 B30 I	190	255	258	2004	2011
3 Compact (E36)	323 ti	M52 B25 (256S3) Gas	125	168	170	1997	2000
3 Compact (E46)	325 ti	M54 B25 (256S5) Gas	141	189	192	2001	2004
3 Coupe (E36)	320 i	M50 B20 (206S1); M5	110	147	149	1991	1998
3 Coupe (E36)	323 i	M52 B25 (256S3) Gas	125	168	170	1995	1999
3 Coupe (E36)	325 i	M50 B25 (256S1); M5	141	189	192	1991	1995
3 Coupe (E36)	328 i	M52 B28 (286S1) Gas	142	190	193	1995	1999
3 Coupe (E36)	M3 3.2	S50 B32 (326S1) Gas	236	316	321	1995	1998
3 Coupe (E46)	320 Ci	M52 B20 (206S4) Gas	110	147	149	1999	2001
3 Coupe (E46)	320 Ci	M54 B22 (226S1) Gas	125	168	170	2000	2006
3 Coupe (E46)	323 Ci	M52 B25 (256S4) Gas	125	168	170	1999	2000
3 Coupe (E46)	325 Ci	M54 B25 (256S5) Gas	141	189	192	2000	2006
3 Coupe (E46)	328 Ci	M52 B28 (286S2) Gas	142	190	193	1998	2000
3 Coupe (E46)	330 Ci	M54 B30 (306S3) Gas	170	228	231	2000	2006
3 Coupe (E46)	330 xi	M54 B30 (306S3) Gas	170	228	231	2000	2006
3 Descapotable (E36)	320 i	M50 B20 (206S2); M5	110	147	149	1993	1999
3 Descapotable (E36)	323 i	M52 B25 (256S3) Gas	125	168	170	1995	1999
3 Descapotable (E36)	325 i	M50 B25 (256S2) Gas	141	189	192	1993	1995
3 Descapotable (E36)	328 i	M52 B28 (286S1) Gas	142	190	193	1995	1999
3 Descapotable (E46)	320 Ci	M54 B22 (226S1) Gas	125	168	170	2000	2007
3 Descapotable (E46)	323 Ci	M52 B25 (256S4) Gas	125	168	170	2000	2000
3 Descapotable (E46)	325 Ci	M54 B25 (256S5) Gas	141	189	192	2000	2006
3 Descapotable (E46)	330 Ci	M54 B30 (306S3) Gas	170	228	231	2000	2006
3 Touring (E36)	320 i	M52 B20 (206S3) Gas	110	147	149	1995	1999
3 Touring (E36)	323 i	M52 B25 (256S3) Gas	125	168	170	1995	1999
3 Touring (E36)	328 i	M52 B28 (286S1) Gas	142	190	193	1995	1999
3 Touring (E46)	320 i	M52 B20 (206S4) Gas	110	147	149	1999	2000
3 Touring (E46)	320 i	M54 B22 (226S1) Gas	125	168	170	2000	2005
3 Touring (E46)	325 i	M54 B25 (256S5) Gas	141	189	192	2000	2005
3 Touring (E46)	325 xi	M54 B25 (256S5) Gas	141	189	192	2000	2005
3 Touring (E46)	328 i	M52 B28 (286S2) Gas	142	190	193	1999	2000
3 Touring (E46)	330 i	M54 B30 (306S3) Gas	170	228	231	2000	2005
3 Touring (E46)	330 xi	M54 B30 (306S3) Gas	170	228	231	2000	2005
5 (E34)	520 i 24V	M50 B20 (206S1); M5	110	147	149	1990	1995
5 (E34)	525 i 24V	M50 B25 (256S1); M5	141	189	192	1990	1995
5 (E34)	525 iX 24V	M50 B25 (256S1); M5	141	189	192	1991	1995
5 (E39)	520 i	M52 B20 (206S3); M5	100	134	136	1996	2003
5 (E39)	520 i	M52 B20 (206S3); M5	110	147	149	1996	2003
5 (E39)	520 i	M54 B22 (226S1) Gas	125	168	170	2000	2003
5 (E39)	523 i	M52 B25 (256S3); M5	125	168	170	1995	2000
5 (E39)	525 i	M54 B25 (256S5) Gas	141	189	192	2000	2003
5 (E39)	528 i	M52 B28 (286S1); M5	142	190	193	1995	2000
5 (E39)	530 i	M54 B30 (306S3) Gas	170	228	231	2000	2003
5 (E60)	520 i	M54 B22 (226S1) Gas	125	168	170	2003	2010
5 (E60)	525 i	M54 B25 (256S5) Gas	141	189	192	2003	2005
5 (E60)	530 i	M54 B30 (306S3) Gas	170	228	231	2001	2005
5 (E60)	530 i	N52 B30 A; N52 B30 I	190	255	258	2005	2007
5 Touring (E39)	520 i	M52 B20 (206S3); M5	100	134	136	1997	2001
5 Touring (E39)	520 i	M52 B20 (206S3); M5	110	147	149	1997	2001
5 Touring (E39)	520 i	M54 B22 (226S1) Gas	125	168	170	2000	2003

DIMENSIONS

H (Height): 104 mm

OD (Outer Diameter): 84 mm

ID (Inner Diameter): 43 mm

ID2 (Inner Diameter): 43 mm

Gaskets:

1 Unit/s (OD/ID) 100 mm / 92 mm

1 Unit/s (OD/ID) 12 mm / 7 mm

1 Unit/s (OD/ID) 12 mm / 7 mm

1 Unit/s (OD/ID) 18 mm / 12 mm

PRESENTATION

UNITS PER BOX: 24

WEIGHT: 3.4 Kg

VOLUME: 0.02 cbm

EAN13: 5055148201371

ITF14: 85055148201377




67845 Millard Oil Filter

BMW							
Serie	Model	Engine	Kw	HP	CV	Start	Finish
5 Touring (E39)	523 i	M52 B25 (256S3); M5 125	168	170	1997	2000	
5 Touring (E39)	525 i	M54 B25 (256S5) Gas	141	189	192	2000	2004
5 Touring (E39)	528 i	M52 B28 (286S1); M5 142	190	193	1996	2000	
5 Touring (E39)	530 i	M54 B30 (306S3) Gas	170	228	231	2000	2003
5 Touring (E61)	525 i	M54 B25 (256S5) Gas	141	189	192	2004	2010
7 (E38)	728 i; iL	M52 B28 (286S1); M5 142	190	193	1995	2001	
7 (E38)	740 d	M67 D39 (398D1) Die	180	241	245	1999	2001
7 (E65; E66; E67)	730 i; Li	M54 B30 (306S3) Gas	170	228	231	2003	2008
7 (E65; E66; E67)	730 i; Li	N52 B30 A; N52 B30 I	190	255	258	2005	2008
7 (E65; E66; E67)	740 d	M67 D39 (398D1) Die	190	255	258	2002	2005
X3 (E83)	2.5 i	M54 B25 (256S5) Gas	141	189	192	2004	2006
X3 (E83)	3.0 i xDrive	M54 B30 (306S3) Gas	170	228	231	2003	2006
X5 (E53)	3.0 i	M54 B30 (306S3) Gas	170	228	231	2000	2006
Z3 Coupe (E36)	2.8 i	M52 B28 (286S1); M5 142	190	193	1998	2000	
Z3 Coupe (E36)	3.0 i	M54 B30 (306S3) Gas	170	228	231	2000	2003
Z3 Roadster (E36)	2.0 i	M52 B20 (206S4) Gas	110	147	149	1999	2003
Z3 Roadster (E36)	2.2 i	M54 B22 (226S1) Gas	125	168	170	2000	2002
Z3 Roadster (E36)	2.8 i	M52 B28 (286S1); M5 142	190	193	1996	2000	
Z3 Roadster (E36)	3.0 i	M54 B30 (306S3) Gas	170	228	231	2000	2003
Z4 Roadster (E85)	2.2 i	M54 B22 (226S1) Gas	125	168	170	2003	2005
Z4 Roadster (E85)	2.5 i	M54 B25 (256S5) Gas	141	189	192	2002	2005
Z4 Roadster (E85)	3.0 i	M54 B30 (306S3) Gas	170	228	231	2002	2005

WIESMANN							
Serie	Model	Engine	Kw	HP	CV	Start	Finish
MF3 Roadster	2.8	M52 (286S1) Gasolina	142	190	193	1996	2002
MF3 Roadster	3.0	M54306S3 Gasolina	170	228	231	2003	

DIMENSIONS

H (Height):	104 mm
OD (Outer Diameter):	84 mm
ID (Inner Diameter):	43 mm
ID2 (Inner Diameter):	43 mm

Gaskets:

1 Unit/s (OD/ID)	100 mm / 92 mm
1 Unit/s (OD/ID)	12 mm / 7 mm
1 Unit/s (OD/ID)	12 mm / 7 mm
1 Unit/s (OD/ID)	18 mm / 12 mm

PRESENTATION

UNITS PER BOX:	24
WEIGHT:	3.4 Kg
VOLUME:	0.02 cbm
EAN13:	5055148201371
ITF14:	85055148201377

