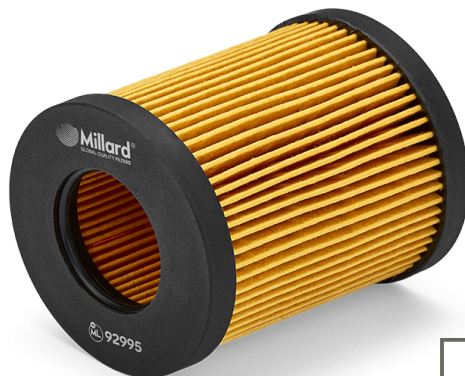


# ML 92995 Millard Oil Filter

Catalog Europe, 04/04/2026



## DIMENSIONS

H (Height):	75 mm
OD (Outer Diameter):	65 mm
ID (Inner Diameter):	32 mm
ID2 (Inner Diameter):	32 mm

## Gaskets:

1 Unit/s (OD/ID)	78 mm / 71 mm
1 Unit/s (OD/ID)	78 mm / 71 mm

## PRESENTATION

UNITS PER BOX:	24
WEIGHT:	2.0 Kg
VOLUME:	0.01 cbm
EAN13:	5055148201227
ITF14:	85055148201223



For updated information visit <http://mlrd.es/ML-92995>

## CROSS REFERENCES

<b>ALFA ROMEO</b>	71737926	<b>KNECHT/MAHLE</b>	OX386D
<b>BOSCH</b>	1457429248	<b>MANN-FILTER</b>	HU7114x
<b>FIAT</b>	71737926	<b>OPEL</b>	5650354
<b>GENERAL MOTORS</b>	93183412	<b>PURFLUX</b>	L373
<b>HENGST</b>	E46HD126	<b>SUZUKI</b>	1651079J50
<b>KNECHT/MAHLE</b>	OX 386D	<b>UFI</b>	2504900

## APPLICATIONS (EUROPE)

### ALFA ROMEO

Serie	Model	Engine	Kw	HP	CV	Start	Finish
159 (939 )	1.9 JTDM 16V (9: 939 A2.000 Diesel		110	147	149	2005	2011
159 (939 )	1.9 JTDM 16V (9: 939 A8.000; 937 A8.0		100	134	136	2005	2011
159 (939 )	1.9 JTDM 8V (93: 939 A1.000 Diesel		88	118	120	2005	2011
159 (939 )	1.9 JTDM 8V (93: 939 A7.000; 937 A7.0		85	114	115	2005	2011
159 Sportwagon (939 )	1.9 JTDM 16V (9: 939 A8.000; 937 A8.0		100	134	136	2006	2011
159 Sportwagon (939 )	1.9 JTDM 16V (9: 939 A2.000 Diesel		110	147	149	2006	2011
159 Sportwagon (939 )	1.9 JTDM 8V (93: 937 A7.000 Diesel		85	114	115	2006	2011
159 Sportwagon (939 )	1.9 JTDM 8V (93: 939 A1.000 Diesel		88	118	120	2006	2011

### CADILLAC

Serie	Model	Engine	Kw	HP	CV	Start	Finish
BLS	1.9 D	Z 19 DTR Diesel	132	177	179	2007	
BLS	1.9 D	Z19DTH Diesel	110	147	149	2006	
BLS Wagon	1.9 D	Z 19 DTR Diesel	132	177	179	2007	
BLS Wagon	1.9 D	Z19DTH Diesel	110	147	149	2007	

### FIAT

Serie	Model	Engine	Kw	HP	CV	Start	Finish
CROMA (194 )	1.9 D Multijet	939 A7.000 Diesel	85	114	115	2005	2011
CROMA (194 )	1.9 D Multijet	939 A8.000 Diesel	100	134	136	2005	2007

**FIAT**

Serie	Model	Engine	Kw	HP	CV	Start	Finish
CROMA (194 )	1.9 D Multijet (19- 939 A1.000 Diesel		88	118	120	2005	2011
CROMA (194 )	1.9 D Multijet (19- 939 A2.000 Diesel		110	147	149	2005	2011
CROMA Furgoneta-Station wa	1.9 MJTD (194A) 939 A1.000 Diesel		88	118	120	2006	2011
GRANDE PUNTO (199 )	1.9 D Multijet	199 A5.000 Diesel	96	129	130	2005	
GRANDE PUNTO (199 )	1.9 D Multijet	939 A1.000 Diesel	88	118	120	2005	
GRANDE PUNTO (199 )	1.9 D Multijet	939 A7.000 Diesel	85	114	115	2006	2009
SEDICI (189 )	1.9 D Multijet	D19AA Diesel	88	118	120	2006	2011
SEDICI (189 )	1.9 D Multijet 4x4	D19AA Diesel	88	118	120	2006	2011

**OPEL**

Serie	Model	Engine	Kw	HP	CV	Start	Finish
ASTRA H (A04)	1.9 CDTi (L48)	Z 19 DT Diesel	88	118	120	2004	2010
ASTRA H (A04)	1.9 CDTi (L48)	Z 19 DTH Diesel	110	147	149	2004	2010
ASTRA H (A04)	1.9 CDTi (L48)	Z 19 DTL Diesel	74	99	101	2005	2010
ASTRA H (A04)	1.9 CDTi 16V (L4 Z 19 DTJ Diesel		88	118	120	2004	2010
ASTRA H Furgoneta-Station w:	1.9 CDTi (L70)	Z 19 DT Diesel	88	118	120	2005	2010
ASTRA H Furgoneta-Station w:	1.9 CDTi (L70)	Z 19 DTH Diesel	110	147	149	2004	2010
ASTRA H Furgoneta-Station w:	1.9 CDTi 16V (L7 Z 19 DTJ Diesel		88	118	120	2004	2010
ASTRA H GTC (A04)	1.9 CDTi (L08)	Z 19 DT Diesel	88	118	120	2005	2010
ASTRA H GTC (A04)	1.9 CDTi (L08)	Z 19 DTH Diesel	110	147	149	2005	2010
ASTRA H GTC (A04)	1.9 CDTi (L08)	Z 19 DTL Diesel	74	99	101	2006	2010
ASTRA H GTC (A04)	1.9 CDTi 16V (L0 Z 19 DTJ Diesel		88	118	120	2005	2010
ASTRA H Station Wagon (A04)	1.9 CDTi (L35)	Z 19 DT Diesel	88	118	120	2005	2010
ASTRA H Station Wagon (A04)	1.9 CDTi (L35)	Z 19 DTH Diesel	110	147	149	2004	2010
ASTRA H Station Wagon (A04)	1.9 CDTi (L35)	Z 19 DTL Diesel	74	99	101	2005	2010
ASTRA H Station Wagon (A04)	1.9 CDTi 16V (L3 Z 19 DTJ Diesel		88	118	120	2004	2010
ASTRA H TwinTop (A04)	1.9 CDTi (L67)	Z 19 DTH Diesel	110	147	149	2005	2010
SIGNUM Hatchback (Z03)	1.9 CDTi (F48)	Z 19 DT Diesel	88	118	120	2004	2008
SIGNUM Hatchback (Z03)	1.9 CDTi (F48)	Z 19 DTH Diesel	110	147	149	2004	2008
SIGNUM Hatchback (Z03)	1.9 CDTi (F48)	Z 19 DTL Diesel	74	99	101	2005	2008
VECTRA C (Z02)	1.9 CDTi (F69)	Z 19 DT Diesel	88	118	120	2004	2009
VECTRA C (Z02)	1.9 CDTi (F69)	Z 19 DTH Diesel	110	147	149	2004	2008
VECTRA C (Z02)	1.9 CDTi (F69)	Z 19 DTL Diesel	74	99	101	2005	2008
VECTRA C GTS (Z02)	1.9 CDTi (F68)	Z 19 DT Diesel	88	118	120	2004	2009
VECTRA C GTS (Z02)	1.9 CDTi (F68)	Z 19 DTH Diesel	110	147	149	2004	2008
VECTRA C GTS (Z02)	1.9 CDTi (F68)	Z 19 DTL Diesel	74	99	101	2005	2008
VECTRA C Station Wagon (Z0	1.9 CDTi (F35)	Z 19 DT Diesel	88	118	120	2004	2009
VECTRA C Station Wagon (Z0	1.9 CDTi (F35)	Z 19 DTH Diesel	110	147	149	2004	2008
VECTRA C Station Wagon (Z0	1.9 CDTi (F35)	Z 19 DTL Diesel	74	99	101	2005	2008
ZAFIRA - ZAFIRA FAMILY B (1/	1.9 CDTi (M75)	Z 19 DT Diesel	88	118	120	2005	2015
ZAFIRA - ZAFIRA FAMILY B (1/	1.9 CDTi (M75)	Z 19 DTH Diesel	110	147	149	2005	2015
ZAFIRA - ZAFIRA FAMILY B (1/	1.9 CDTi (M75)	Z 19 DTL Diesel	74	99	101	2005	2010
ZAFIRA B Furgoneta-monovolt	1.9 CDTi VAN (M Z 19 DT Diesel		88	118	120	2005	2015
ZAFIRA B Furgoneta-monovolt	1.9 CDTi VAN (M Z 19 DTH Diesel		110	147	149	2005	2015

**SAAB**

Serie	Model	Engine	Kw	HP	CV	Start	Finish
9-3 (YS3F; E79; D79; D75)	1.9 TiD	Z 19 DT Diesel	88	118	120	2004	2015
9-3 (YS3F; E79; D79; D75)	1.9 TiD	Z 19 DTH Diesel	110	147	149	2004	2015
9-3 (YS3F; E79; D79; D75)	1.9 TTIID	Z 19 DTR; A 19 DTR I	132	177	179	2007	2015
9-3 Descapotable (YS3F)	1.9 TiD	Z 19 DT Diesel	88	118	120	2004	2015
9-3 Descapotable (YS3F)	1.9 TiD	Z 19 DTH Diesel	110	147	149	2006	2015
9-3 Descapotable (YS3F)	1.9 TTIID	Z 19 DTR; A 19 DTR I	132	177	179	2007	2015
9-3 Station Wagon (E50)	1.9 TiD	Z 19 DT Diesel	88	118	120	2005	2015
9-3 Station Wagon (E50)	1.9 TiD	Z 19 DTH Diesel	110	147	149	2005	2015
9-3 Station Wagon (E50)	1.9 TTIID	Z 19 DTR Diesel	132	177	179	2007	2015
9-5 (YS3E)	1.9 TiD	Z 19 DTH Diesel	110	147	149	2006	2009

**DIMENSIONS**

H (Height):	75 mm
OD (Outer Diameter):	65 mm
ID (Inner Diameter):	32 mm
ID2 (Inner Diameter):	32 mm
<b>Gaskets:</b>	
1 Unit/s (OD/ID)	78 mm / 71 mm
1 Unit/s (OD/ID)	78 mm / 71 mm

**PRESENTATION**

<b>UNITS PER BOX:</b>	24
<b>WEIGHT:</b>	2.0 Kg
<b>VOLUME:</b>	0.01 cbm
<b>EAN13:</b>	5055148201227
<b>ITF14:</b>	85055148201223




**92995 Millard Oil Filter**
**SAAB**

Serie	Model	Engine	Kw	HP	CV	Start	Finish
9-5 Station Wagon (YS3E)	1.9 TiD	Z 19 DTH Diesel	110	147	149	2006	2009

**SUZUKI**

Serie	Model	Engine	Kw	HP	CV	Start	Finish
SX4 (EY; GY)	1.9 DDiS (RW41)	D19AA Diesel	88	118	120	2006	
SX4 (EY; GY)	1.9 DDiS 4x4 (RV)	D19AA Diesel	88	118	120	2006	

**DIMENSIONS**

H (Height):	75 mm
OD (Outer Diameter):	65 mm
ID (Inner Diameter):	32 mm
ID2 (Inner Diameter):	32 mm

**Gaskets:**

1 Unit/s (OD/ID)	78 mm / 71 mm
1 Unit/s (OD/ID)	78 mm / 71 mm

**PRESENTATION**

UNITS PER BOX:	24
WEIGHT:	2.0 Kg
VOLUME:	0.01 cbm
EAN13:	5055148201227
ITF14:	85055148201223

